

INSULIN



ATHSMA



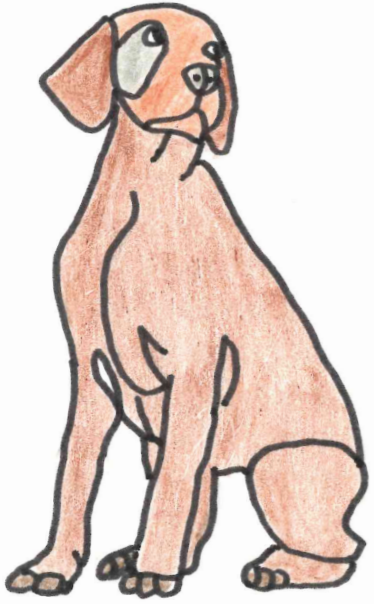
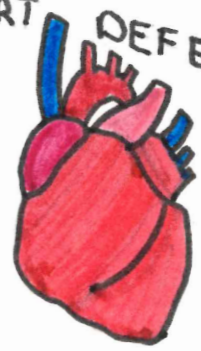
DISEASE



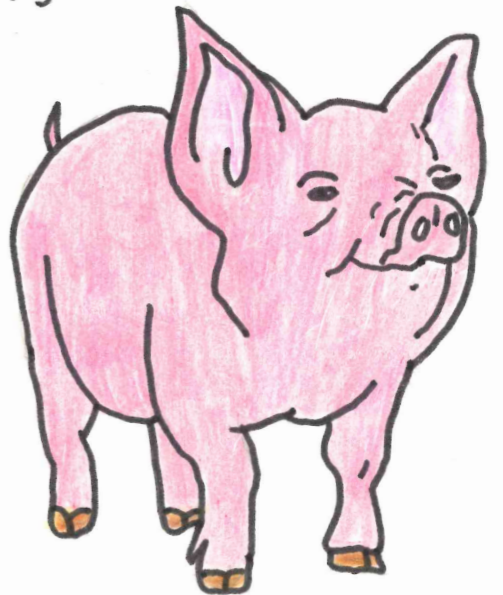
PARKINSON'S

HEART

DEFECTS



ANIMAL RESEARCH SAVES LIVES



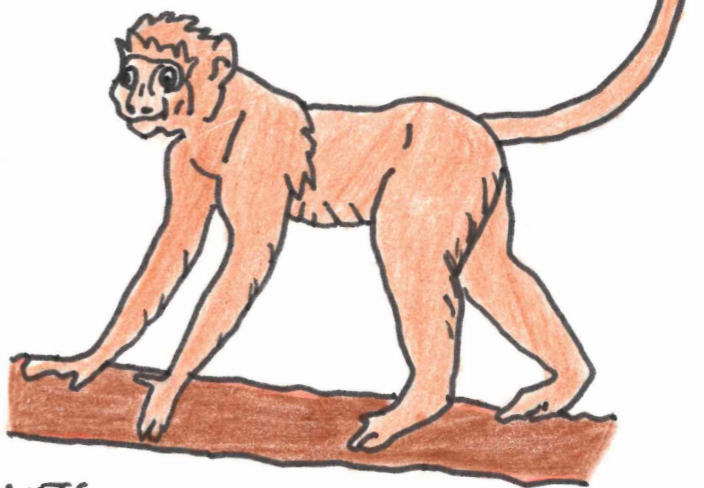
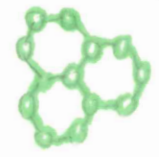
CATARACT



SURGERY

LIVES

BLOOD TRANSFUSIONS

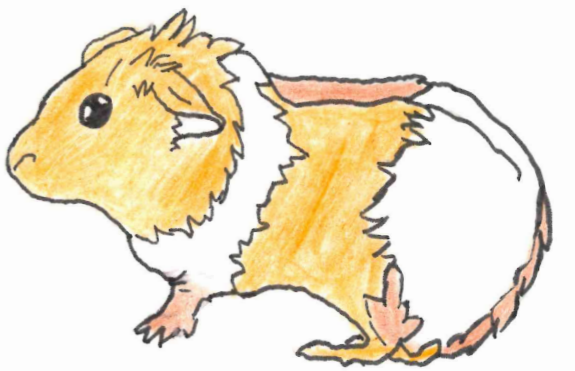
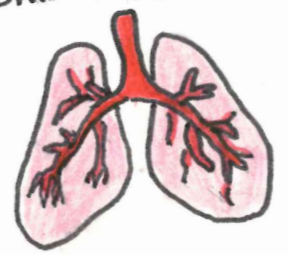


MEDICINE



PSBR

ORGAN TRANSPLANTS



PENNSYLVANIA SOCIETY FOR BIOMEDICAL RESEARCH